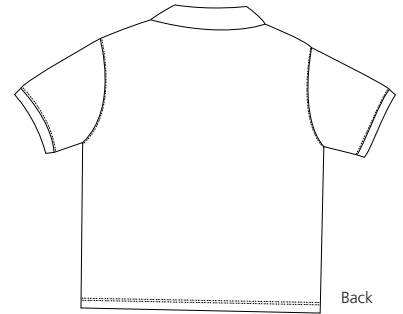
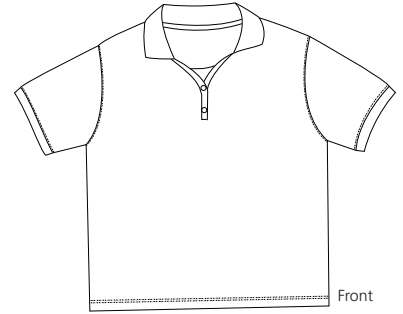


# Ladies 100% Pima Cotton Sport Shirt

PORT | AUTHORITY®



## L448

- \* 100% 5.3-ounce Pima Cotton \* 40-doubles fine knit 2-ply yarn
- \* Double-needle armholes and hem \* Real smoked pearl buttons \* Shaped, feminine fit
- \* Narrow 5 button placket \* Self fabric collar

### Care Instructions:

Machine wash cold with similar colors.  
Only non-chlorine bleach when needed.  
Tumble dry low, remove promptly.  
Cool iron if necessary.

### Finished Measurements in Inches

| Size   | XS | S    | M  | L   | XL | XXL  | Plus 1X | Plus 2X |
|--------|----|------|----|-----|----|------|---------|---------|
| Chest  | 18 | 19   | 20 | 21  | 22 | 23   | 24      | 25      |
| Body   | 23 | 24   | 25 | 26  | 27 | 28   | 29      | 30      |
| Sleeve | 7  | 7.25 | 8  | 8.5 | 9  | 9.25 | 9.5     | 10      |

Chest width measured 1" below arm hole. Body length measured from back neck seam to hem.  
Sleeve length measured from shoulder seam to hem.

### Colors

|  |            |
|--|------------|
|  | Banana     |
|  | Black      |
|  | Blueberry  |
|  | Burgundy   |
|  | Dark Green |
|  | Ivory      |
|  | Light Pink |
|  | Navy       |
|  | Red        |
|  | Seafoam    |
|  | Stone      |
|  | White      |

### Please Note:

Colors shown are approximate and for reference only. For closest match see PMS colors, or for exact match, returnable samples and grommeted samples are available.

### Color Chart

| Colors      | Banana    | Black         | Blueberry | Burgundy  | Dark Green | Ivory     | Light Pink | Navy      | Red       | Seafoam   | Stone     | White     |
|-------------|-----------|---------------|-----------|-----------|------------|-----------|------------|-----------|-----------|-----------|-----------|-----------|
| Textile PMS | 12-0826TC | 19-4203TC     | No Match  | 19-1725TC | 19-5320TC  | 11-0107TC | 13-2005TC  | 19-4024TC | 18-1761TC | 17-5110TC | 15-1217TC | 11-0601TC |
| General PMS | 134C      | Process Black | 7454C     | 505C      | 5535C      | No Match  | 196C       | 533C      | 193C      | No Match  | 7502C     | No Match  |