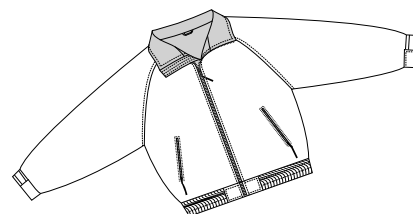
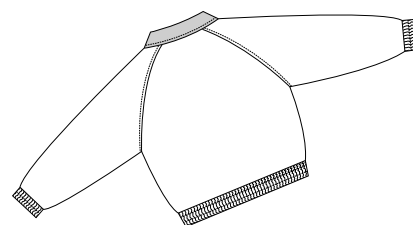


Competitor Jacket

PORT AUTHORITY®



Front



Back

JP54

- * Teklon nylon shell * Fleece lining * Elastic waistband * Elastic cuffs with adjustable straps
- * Nylon-lined sleeves * Lower slash pockets with zip closures
- * Interior pocket with zip closure * Port Pocket™

Care Instructions:

Machine wash cold. Tumble dry low. Do not dry clean. Do not iron. Do not bleach.

Finished Measurements in Inches

Size	XS	S	M	L	XL	2XL	3XL	4XL	5XL	6XL
Length	26	26.5	27	27.5	28.5	29.5	30.5	31.5	32.5	33.5
Chest	22.5	24	25.5	27	28.5	30	32	34	37	39
Sleeve	32	34	36	37	38	39	40	40.5	41.5	42.5
Collar Ht	4.25	4.25	4.25	4.25	4.25	4.25	4.25	4.25	4.25	4.25
Hem	22.5	23.5	24.5	26	27	28.5	30	31.5	37	38.5
Areas for Decoration	Left Chest, Full Back			Port Pocket™			Left Underarm			

Collar measured from center back seam to top hem. Chest width measured 1" below arm hole. Hem measured extended. Body length measured from back neck seam to hem. Sleeve length measured from center back seam to hem.

Colors

		True Black/True Black
		True Hunter/True Navy
		True Navy/Grey Heather
		True Red/True Navy
		True Royal/True Navy

Please Note:

Colors shown are approximate and for reference only. For closest match see PMS colors, or for exact match, returnable samples and grommited samples are available.

Color Chart

Colors	True Black	True Hunter	True Navy	True Red	True Royal
Textile PMS	19-4005TC	19-5917TC	19-3921TC	19-1656TC	No Match
General PMS	426C	5535C	533C	202C	No Match
Trim Colors	Grey Heather	True Black	True Navy		
Textile PMS	No Match	19-4005TC	19-3921TC		
General PMS	No Match	426C	533C		