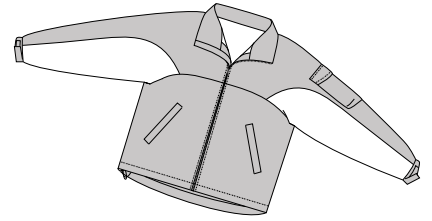
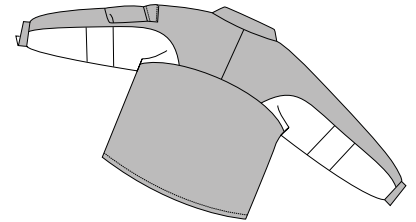


# All-Season Jacket

PORT AUTHORITY®



Front



Back

## J779

- \* 100% waterproof Taslan nylon shell \* Critical seam sealing
- \* Adjustable bottom hem with drawcord and toggles \* 2 front pockets
- \* Inside zippered pocket \* Inside cell phone pocket \* Sleeve pocket

### Care Instructions:







Machine wash cold. Tumble dry low.  
Do not dry clean. Do not iron.  
Do not bleach.

### Finished Measurements in Inches

Size	XS	S	M	L	XL	2XL	3XL	4XL	5XL	6XL
Length	28	28.5	29	30	31	32	32.5	33	34	35
Chest	22	24	25.5	27	28.5	30	31.5	33	36	38
Sleeve	32	34	36	37	38	38.5	39	39.5	40.5	41.5
Collar	4	4	4	4	4	4	4	4	4	4
Areas for Decoration	Left Chest, Full Back			Port Pocket™			Left Inside Zipper, Back Hem			

Collar height measured front of collar. Chest width measured 1" below arm hole.  
Body length measured from back neck seam to hem. Sleeve length measured from center back seam to hem.

### Colors

		Alpine Navy/Chrome
		Black/Chrome
		Red/Chrome

### Please Note:

Colors shown are approximate and for reference only. For closest match see PMS colors, or for exact match, returnable samples and grommets samples are available.

### Color Chart

Colors	Alpine Navy	Black	Red
Textile PMS	19-4025TC	19-4005TC	19-1656TC
General PMS	534C	426C	202C
Trim Colors	Chrome		
Textile PMS	No Match		
General PMS	Cool Grey 5C		